

Technical support on land-based investments for governments and civil society in low- and middle-income countries

The International Institute for Environment and Development (IIED) and the Columbia Center on Sustainable Investment (CCSI) are pleased to offer technical support on issues related to land-based investment. This new initiative covers multiple sectors including investments in agriculture, extractives, forestry, infrastructure and renewable projects.

Tailored support is available to **governments, civil society organizations**, and **other relevant actors** working at the regional, national and local levels. Activities may include:

- training, learning, and multi-stakeholder collaborations on particular opportunities, challenges or good practice;
- support on policy development and implementation, regulatory assessments, legislative drafting or institutional reform; and
- technical and advisory support on specific land-based investment projects.

Technical support is provided by IIED and CCSI, with complementary expertise from additional partners where beneficial.

Funding

Depending on needs, the cost of technical support will be covered by the ALIGN project.



Criteria for support

In determining whether individual requests for support can be met, the following criteria apply:

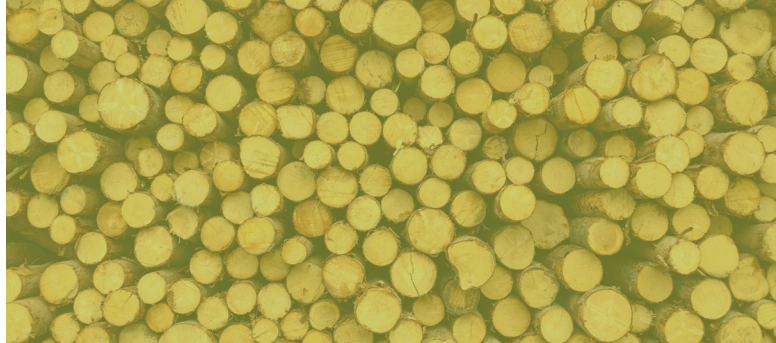
- whether the request relates to the theme of responsible land-based investment;
- whether the request is a good match with the types of intervention possible (such as those listed);
- potential for long-term sustainability, particularly where there is scope to contribute to improved policy or practice.

Registering your interest

Requests for technical support are now invited from government, civil society and other relevant actors. To register your interest, please email align@iied.org with a brief outline of the issue and the support sought.



The technical support is part of [Advancing Land-based Investment Governance \(ALIGN\)](#) project, a project implemented in partnership between the International Institute for Environment and Development (IIED), the Columbia Center on Sustainable Investment (CCSI), and Namati and funded by UK Aid from the UK government. ALIGN works to improve the governance of land-based investments.



About IIED and CCSI

IIED and CCSI have been at the forefront of recent research, policy and action on the governance of land and land-based investment.

IIED

IIED provides a unique combination of research and action to promote sustainable development. Our team brings:

- recognised expertise in the governance of land and land-based investment, including agriculture, extractives and infrastructure projects;
- extensive experience working with government, civil society and the private sector;
- a network of partnerships and collaborations in over 60 countries from both global North and South.

CCSI

CCSI, a joint center of Columbia Law School and the Earth Institute at Columbia University, is a leading applied research center dedicated to sustainable international investment. Our team of lawyers and researchers brings:

- substantive expertise in responsible investment in land, agriculture, and extractives;
- a track record of developing resources and policy proposals that advance understanding or practice of responsible investment; and
- significant experience in supporting, training and collaborating with government officials and civil society.

